

CALENDAR OF EVENTS

- Aug 6** Board Meeting, 10:30 am
- Aug 13** General Meeting, **Cheryle Chapline**, "Drawing Exercises & Techniques", \$10
Painting of the Month and Prizes
- Sept 3** Board Meeting, 10:30 am
- Sept 10** General Meeting, Installation of 2025-2026 Officers,
Sarah Pick and **Michele Grinnan**, "Card Instruction"; Free.
Salad Luncheon (Everyone brings a salad to share for lunch.)
Painting of the Month and Prizes
Drop off Fall Exhibit Paintings at MCC, Performing Arts Building,
at 2:30 p.m.
- Oct 1** 2025-2026 Annual CTWS Membership Dues (\$35) are due

GREETINGS FROM YOUR PRESIDENT



Greetings to all my favorite artists!
While we all try to carve out time to lose ourselves in creative time with watercolor, this quote speaks to me.
"Time is free, but it's priceless. You can't own it, but you can use it. You can't keep it, but you can spend it. Once you've lost it you can never get it back." - **Harvey MacKay**
Time seems to be my greatest shortage with plans constantly being juggled to prioritize the most precious moments in life. I'm so glad I chose to carve out a piece Wednesday, July 9 for the field trip **Michele Grinnan** and **Sarah Pick** planned for us. We had such a lovely time exploring the Kimbell and Modern museums and gift shops! I especially enjoyed quality time with varied members. We discovered, shared, laughed and savored a unique lunch experience at the Modern before returning safely home. Of course, we missed those who were unable to travel with us and look forward to seeing you at the Church August 13 for **Cheryle Chapline's** professional instruction on drawing!
Thank you for the honor of serving such talented and warm-hearted group of artists this year.
Keep painting, drawing & finding joy in art!

~Bettye

DRAWING & ALL THAT JAZZ!!

August's CTWS Monthly Meeting will be about DRAWING, PERSPECTIVE, BIG & NEGATIVE SHAPES and GRIDS for focal point and details... in other words, ALL THAT JAZZ! **Cheryle Chapline** will be leading us through these crucial skills and elements of design that are needed for a successful painting. A fast-paced morning will segue to a finished drawing in the afternoon, applying all of the practiced elements.



Cheryle will be discussing the tools and the tips that she loves for drawing, so bring your favorites, too. You do not need to bring your watercolors for this workshop.

The supply list for this workshop includes:

- Sketchbook (9 x 12" or larger) or 80 lb. sketch-quality paper
- Tracing Paper to fit your sketchbook or papers, 2-3 sheets
- #2 Pencil (we will have a sharpener in the room)

- Kneaded Eraser
(prefer Design or Prismacolor brands)
- Masking tape
- Scissors
- Ruler (18" if you have it)
- Provided for you in a kit:**
- Images
- Paperclips & String
- Prisma Color Ebony Pencil with White Eraser

With sketching through to finished piece of fine art, drawing is going to determine, from the very beginning of a painting, whether or not it will be effective. Honing this craft will make all the difference in how you and others view your work. Many times, the viewer will know something is "off" but not necessarily what it is (those humans are smart like that). Better to start with a thought-out plan and avoid major stumbling blocks along the way. So, get your trusty tools ready for a fun, whirlwind trip through the most important skills we need to master in order to produce a successful painting because DRAWING is the name of the game!

While **Cheryle** has been with us for many years, we also have many new members who do not know the fine company we keep at CTWS. Let's take the time to appreciate **Cheryle's** background and accomplishments.

INTRODUCING CHERYLE CHAPLINE

Fine Artist and Educator

The resonating theme throughout the life of fine artist **Cheryle Chapline** is one of visual discovery. By observing the commonplace and transforming her interpretation of the subject into fine art, **Ms. Chapline** continues to build her lasting legacy of work that changes the viewers' perspective. The observer sees the subject, literally, in a whole new light because of the interplay of light and color, accomplished by glazing the underpainting prior to the application of the top local color.

Watercolor, as her primary medium, lends itself to this method of color theory by capitalizing on its transparent qualities, allowing color to mix optically on the paper rather than mixing color on the palette. A visual vibration is created that cannot be replicated in any other way, drawing attention to the vast variety of hues, tones and values present in our natural world. Sharing her creations with viewers as well as teaching the techniques of watercolor completes the creative process, ensuring that passion for this amazing medium is passed on.

In addition to producing her award-winning paintings, **Ms. Chapline** is a frequent presenter for watercolor and fine art groups.

Jazz, continued, page 2, column 1

Jazz, continued from page 1

Her professional affiliations include American Watercolor Society, National Watercolor Society, and Central Texas Watercolor Society.

Ms. Chapline's paintings have been published in five prior *Splash: The Best in watercolor* competition publications, including current inclusion in the *Splash 26*, published July 2025.

Her work has been included in the National Watercolor Society's 97th International Exhibition as well as the Louisiana Watercolor Society's International Exhibition 2023.

Ms. Chapline's paintings have also been included in several *Richeson 75 International Figure/Portrait Competition* books, in *The Art of Watercolour* magazine as one of fifteen Reader's Choice awardees, as well as being represented in an exhibition for the *Hunting Art Prize*.



A DAY OF ART AND APPETITE: KIMBELL MUSEUM OUTING

The watercolor society members recently visited the Kimbell Art Museum and had a great time exploring the exhibits. Everyone appreciated the chance to see a range of artistic styles and take in the quiet beauty of the galleries. Afterward, the group walked over to the Modern for lunch, enjoying good food and easy conversation in a relaxed setting. It was a peaceful outing with art, friends, and inspiration.



Our fearless field trip leader, Michele Grinnan, coordinated and colorful!



Our President, Bettye Logan, and Myrl Luper in deep discussion.



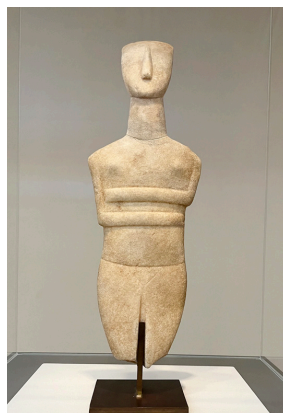
When you find your museum twin, Thomas Galler!



Palette pals, Stephanie Aisenstein and Kelly Beckworth, at the Kimbell Art Museum



A Cycladic figurine, over 4,000 years old



A Cycladic Female Figure, c. 2500–2300 B.C.



Portrait of May Sartoris, c. 1860



"Mirror" by artist Water Field (WATEREVER)



Harriet Kelley, River Neves, Marlee Barton, Kim Hoerster, and Jamie Blassingame visiting and studying the art



River Neves and Jamie Blassingame discussing the art while new member, **Shannon Birchum**, studies the painting



Thanks, **Bettye Logan**, for the thoughtful and beautiful scarves!



Two of our Georgetown members, **Kim Hoerster** and **Mona Myers**, enjoying the art



From gallery strolls to gourmet bites—our watercolor crew knows how to do Fort Worth right. Fueling up on friendship and fine dining



A picture-perfect day at the Kimbell—our watercolor society members gathered outside the museum, scarves and smiles in full display

AUGUST 2025



P.O. Box 24118
Waco, TX 76702-4118
www.centrltexaswatercolor.com

MONTHLY MEETINGS are the Second Wednesday of most months, at Episcopal Church of The Holy Spirit, corner of Wooded Acres & Lake Haven, behind Target. Meetings begin at 9 a.m. unless we tell you differently. The Church's phone number is 254-772-1982 (phone use limited to emergencies).

2024 – 2025 CTWS Board Members OFFICERS

PRESIDENT	Bettye Logan*
1st VICE PRESIDENT	Lisa Koets*
2nd VICE PRESIDENT (Multi-Day Workshops)	Cheryle Chapline*
3rd VICE PRESIDENT (Monthly Programs)	Sarah Pick*
RECORDING SECRETARY	Michele Grinnan*
TREASURER	Sandy Sadler*
IMMEDIATE PAST PRESIDENT	Brenda Marwitz*, Mary Coleman*

CHAIRMAN OF STANDING COMMITTEES CHAIRMAN OF SUB-COMMITTEES

ACTIVITY	Kay Kopp*
Hospitality/Monthly Meetings	Kay Kopp
Hospitality/Special Events	Patty Davis, Vicki Northern
Library	Mary Coleman, Brenda Marwitz
Monthly Programs	Michele Grinnan
Painting of the Month	Donna Swartz
BUSINESS	Barbara Haynes*
BYLAWS/PARLIAMENTARIAN	Kathi Crump*
Contributions/Donations	Donna Swartz
Scholarship	Sandy Sadler
COMMUNICATION	Patty Davis*
Community Liaison	Lisa Koets
Contact	Patty Davis
Membership	Jamie Valigura
Newsletter	Mary Belf
Yearbook	Suzi Ickles
PUBLICITY	Greg Blancett*
Social Media	Lisa Koets, Sarah Pick
Exhibits	Greg Blancett
Photos/Monthly Meetings	Barbara Casey
Photos/Exhibits	Greg Blancett
Website	Greg Blancett

*Attendance of board meetings required.

Send newsletter items by the 15th of each month to
Mary Belf • belfelf1@gmail.com • 469-585-4244



START SAVING YOUR GENTLY USED EXTRA ART SUPPLIES FOR A MEMBER



SEPT 10
MONTHLY MEETING
Bring Dollar Bills!

MASKING TAPE LABEL:

\$2 J.Valigura

**PRICE
FIRST INITIAL
LAST NAME**

'Bills' only event. **NO CHANGE**
Please round to nearest dollar and
package small items together.
Bring small bills for purchases.

AUGUST BIRTHDAYS

Thomas Galler	8/1	River Neves	8/13
Laura Kvalheim	8/5	Sandy Sadler	8/15
Shannon Birchum	8/6	Beth Hatcher	8/16
Steve Keller	8/6	Mark Henry	8/18
Luisa Gomez Kerr	8/9	Robert Borter	8/19
Kathi Crump	8/10	Kelly Beckworth	8/25
Brenda Marwitz	8/10	Peggy Bledsoe	8/25
Michelle Butler	8/12	Myrl Luper	8/31



*Have A
Wonderful
Birthday*